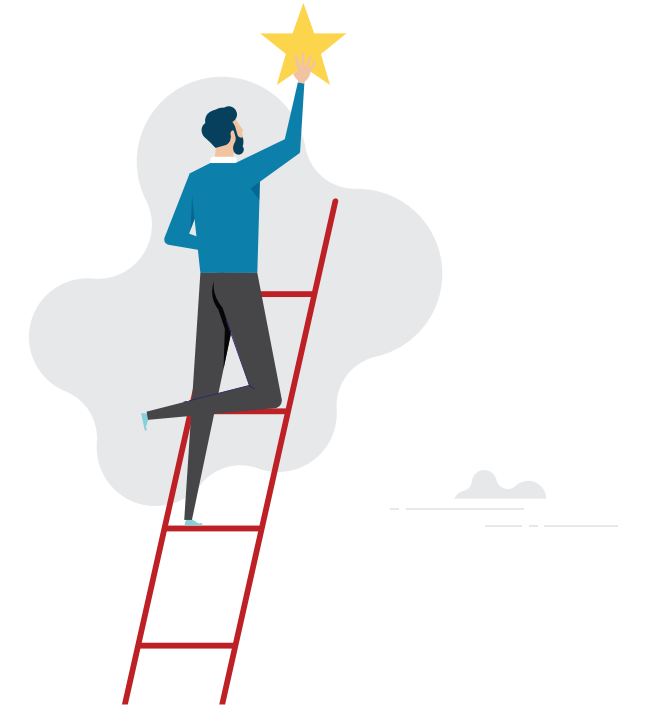


OPEN PROGRAMME

# A “MASTER YOUR CRAFT” SERIES 2024



**TACK** ✓  
**TMI**  
Gi Group Holding



**Tack TMI Malaysia**

TMI Consultancy Sdn. Bhd. (633749-K)  
B-2-3, Block B, Plaza Damas  
60 Jalan Sri Hartamas 1  
50480 Kuala Lumpur, Malaysia

[CLICK HERE TO RESERVE YOUR SEAT](#)

Questions? **Chat** with us.



## 18 JUNE

### ELEVATE YOUR GAME: NURTURING GROWTH MINDSET & FOSTERING INNOVATION

Lynnette Chai  
1 DAY  
Course Fee: RM1,250\*

## TBC

### BUSINESS PARTNERING FOR SUCCESS: A STRATEGIC APPROACH

Sivakumaran  
2 DAYS  
Cost: RM1,250\*/day

## TBC

### EMPOWER YOUR ENTERPRISE: UNLOCKING THE POWER OF EMPLOYEESHIP

Hee Sio Ching, Ansie  
2 DAYS  
Cost: RM1,250\*/day

## TBC

### BREAKING BARRIERS: DEI EMPOWERED WOMEN IN LEADERSHIP

Agnes Elizabeth  
2 DAYS  
Cost: RM1,250\*/day

discount  
10%

## EARLY BIRD RATES



Sign up for **1 programme:**

**RM 1,099\*** /DAY



Sign up for any programme:

**RM 989\*** /DAY

from the  
same company



Sign up for **2 programmes:**

**RM 989\*** /DAY



Sign up for any programme:

**RM 989\*** PER PAX/DAY

from the same company

discount  
20%

## EARLY BIRD RATE



Sign up for **more than 2 programmes:**

**RM 899\***

\* The course fee displayed does not include Malaysia's Sales and Service Taxes (SST); the final invoiced amount will be inclusive of SST.

Price is valid for sign-ups or paid registrations by 25 March 2024, on a first-come, first-served basis.



18 JUNE



# ELEVATE YOUR GAME: NURTURING **GROWTH MINDSET & FOSTERING INNOVATION**

*Where Mastery Meets Ingenuity*

## OVERVIEW:

In today's rapidly evolving business landscape, where competition is fierce and change is the only constant, the ability to adapt, innovate, and thrive is paramount.

Discover the power of a growth mindset and how it can transform your approach towards challenges and setbacks. Learn how to embrace failure as a learning opportunity, cultivate persistence and resilience, and continuously strive for improvement.

Master the five stages of the design thinking framework – empathize, define, ideate, prototype, and test – and apply it to solve workplace problems. Learn how to empathize with your customers, generate creative solutions, and refine your ideas through iteration.

Empower yourself to become an innovation catalyst with the tools and strategies to develop groundbreaking solutions that meet the needs of your customers and stakeholders.

## COURSE OUTCOMES:

- Distinguish between fixed and growth mindsets and identify your current mindset
- Adopt strategies to cultivate a growth mindset and foster a culture of innovation
- Brainstorm and generate creative ideas through effective ideation techniques
- Apply design thinking principles to solve challenges and develop innovative solutions



**SENIOR CONSULTANT**  
**Lynnette Chai**

Lynnette is a HRDC accredited trainer as well as a certified professional coach with more than 10 years of corporate experience. She is passionate about Psychology and human behaviors and is inspired to empower individuals to sustain a holistic and productive lifestyle through real-life applications.

Throughout her career, she has trained and consulted different businesses across various industries in designing effective personal development and employee wellness programs, by leveraging on her knowledge in psychology combined with her vast corporate exposure. She believes that every thriving organization is built on thriving individuals which can be achieved by cultivating a healthy mental wellness environment through training, leadership coaching and counseling.

In her clinical work as a licensed and registered counsellor, she specializes in working with individuals who are experiencing psychological challenges such as depression, anxiety, stress, burnout, grief, and trauma. As the co-founder of re:mind Psychology Center, she aspires to equip communities with sustainable life skills, knowledge and wisdom by helping them establish meaningful relationships with themselves and the world around them.

**COST** RM1,250\*

**CONTACT:** [malaysia@tacktmiglobal.com](mailto:malaysia@tacktmiglobal.com)

## TRAINING FORMAT:

4 modules

1 day (7 hours)

## TARGET AUDIENCE:

- Managers and team leaders seeking to cultivate a culture of innovation and creativity within their teams
- Individual contributors aspiring to develop their problem-solving and creative thinking skills
- Entrepreneurs eager to harness design thinking to develop new products and services

**Register for this workshop today and unleash your true potential to drive transformative change.**



# BUSINESS PARTNERING FOR SUCCESS: A STRATEGIC APPROACH

*Unlocking Synergy Through Collaboration*

## OVERVIEW:

In the dynamic world of business, collaboration is the cornerstone of success. Effective business partnering is an art that transforms relationships into strategic alliances, paving the way for shared growth and mutual prosperity.

Discover the profound impact of effective business partnering and how it can propel your organization to new heights with:

- Enhanced Expertise and Support
- Stakeholder-Centric Solutions
- Trusted Advisor Status

## COURSE OUTCOMES:

- Determine your current level as a business partner
- Transcend the Victim mindset to achieve the ideal Business Partner mindset
- Cultivate trust and connection with key stakeholders and navigate the stakeholder decision-making process smoothly
- Practice ways to have collaborative conversations with and give feedback to and received feedback from Stakeholders.



## CONSULTANT Sivakumaran

Siva is a firm believer in developing people through sustainable learning processes. His passion has always revolved around in initiating an organization that continuously learn. His core areas of specialization are leadership development, team development, self management, coaching and effective communication.

His facilitation style along with practical approach using real illustrations and models that are easy to comprehend inspires participants to apply the learning within their personal and professional space. He strongly propagates a joyful learning environment as this would result in sustainable practices.

Siva's background is in Corporate Training and Consulting where he has worked in various specialist and leadership positions in L & D, HR. He started to work within Learning and Development space since 1993. Over the last 30 years, Siva has been involved in facilitation, design & development of training programs, train the trainer, job profiling assessments, leadership assessment center, talent development, coaching for performance, leadership & team development, etc. He has also consulted in the area of rolling out corporate values, customer experience management, culture integration, performance improvement, competency development framework, on-boarding, etc.

**COST** RM1,250\*/DAY

**CONTACT:** [malaysia@tacktmiglobal.com](mailto:malaysia@tacktmiglobal.com)

## TRAINING FORMAT:

8 modules

2 days (14 hours)

## TARGET AUDIENCE:

- Sales professionals striving to increase their sales success by building trust with their customers
- Project managers and C-suites seeking to elevate their collaboration and communication skills
- Business professionals aiming to forge stronger relationships with their stakeholders

**Enroll in this empowering workshop today and emerge as an indispensable ally, driving innovation, fostering collaboration, and navigating the intricacies of stakeholder relationships with confidence and finesse.**



# EMPOWER YOUR ENTERPRISE: UNLOCKING THE POWER OF **EMPLOYEEESHIP**

*Unlock Your Employeeship Potential*

## OVERVIEW:

Companies are constantly seeking the elusive key to unlocking their true potential to stay ahead of the competition. The business landscape is such where the survival of the fittest reigns supreme. However, the answer lies not just in the hands of management, but in the hearts and minds of every employee.

Introducing Employeeship, the transformative concept that empowers every individual to become a driving force behind organizational success. Far from being mere cogs in a machine, Employeeship recognizes the inherent value of each employee, fostering a culture of ownership and shared responsibility. It's about breaking down silos, transcending departmental boundaries, and uniting every individual in the pursuit of common goals.

## COURSE OUTCOMES:

- **Faster and More Confident Change Implementation:** Empower employees to embrace change as an opportunity for growth, enabling swift and effective transformation.
- **Unwavering Commitment to Excellence:** Instill a culture of dedication and continuous improvement, driving organizational excellence.
- **Enhanced Responsibility and Freedom of Action:** Enable employees to take ownership of their work, have a positive attitude and foster a spirit of initiative and willingness to go the extra mile.



**SENIOR CONSULTANT**  
**Hee Sio Ching, Ansie**

Hee Sio Ching or Ansie is a dynamic and experienced facilitator who specializes in the power of communication. She believes that the way we communicate could create a strong impression as individuals, towards our customers and stakeholders, and leadership styles, which ultimately gives a reflection on the organization's image. Coming from a mixed-parentage home with diverse experiences, she cultivates diversity, equity, and inclusion in her sessions,

relating with real-life experiences and thus connecting to the participants' hearts.

Ansie is a proactive, lively, entertaining, and outspoken individual who is able to connect with people from all walks of life. She believes that every employee plays a significant role in the organization, and has something unique to offer and that by working together, everyone can contribute to the success of the organization. She is committed to creating a workplace where everyone feels valued and respected. She is a gifted speaker who is able to deliver engaging and informative presentations that leave her audience feeling inspired and motivated. Ansie is also a skilled facilitator who is able to create a safe and supportive learning environment where participants can feel comfortable sharing their ideas and learning from each other.

Ansie is passionate about helping people develop their communication and interpersonal skills so that they can be more successful in their personal and professional lives. She believes that everyone has the potential to be a great communicator, and she is committed to helping people reach their full potential.

**COST** RM1,250\*/DAY

**CONTACT:** [malaysia@tacktmiglobal.com](mailto:malaysia@tacktmiglobal.com)

## TRAINING FORMAT:

7 modules

2 days (14 hours)

## TARGET AUDIENCE:

- HR professionals focused on developing a more effective employee engagement strategy
- People managers dedicated to empower their employees to take ownership and accountability of their work
- Business owners committed to create a more engaged and productive workforce



**Register for our signature Employeeship course today and witness the remarkable power of an empowered workforce.**



# BREAKING BARRIERS: DEI EMPOWERED **WOMEN IN LEADERSHIP**

*Empowering Women To Drive Change*

## OVERVIEW:

The corporate landscape is more dynamic and interconnected than ever before. Today, diversity, equity, and inclusion (DEI) are not just buzzwords; they are the cornerstones of transformative leadership.

Embark on a profound journey of exploration, delving into the nuances of DEI and its profound impact on women's leadership journeys. Equip yourself with the strategies to lead change initiatives that promote DEI within your organization.

The challenges faced by women in the workplace is unique to our Asian culture and mindset. Develop specific leadership skills to address these challenges and garner consensus, overcome resistance, and cultivate a culture of equity and inclusion.

Nurture your personal commitment to continuous learning and growth as a DEI-powered woman leader.

## COURSE OUTCOMES:

- Identify and analyze various leadership styles and develop strategies to effectively navigate challenges
- Develop strategies to lead change initiatives and cultivate allies to advance DEI goals
- Apply DEI principles to build inclusive teams and address unconscious bias in the workplace
- Master effective communication and negotiation techniques to enhance their leadership impact



**MANAGING DIRECTOR**  
**Agnes Elizabeth**

As a highly motivated and passionate leader, Agnes has an innate ability to strategically plan and transform ideas into long-term implementable and sustainable business operations. During the pandemic, she played a key role in securing new business which was critical to the company's turnaround.

From local conglomerates to global organisations, Agnes has made significant contributions to the bottom lines of all the companies that she has worked with, effectively managing costs to maximise profits. She continues to successfully navigate revenue and business expansion to create and nurture sustainable, long-term and profitable relationships with clients, suppliers, and stakeholders across the network.

Agnes is an exuberant leader with solid communication and interpersonal skills to establish and maintain rapport with people across all levels of an organization, in business, in corporate as well as in the civil service. Carving a name for herself in a consultative role, offering creative options and solutions to help ensure clients achieve their business objectives.

Drawing from her wealth of experience and a strong drive to succeed, she leverages best practices to enhance Tack TMI's brand reputation and commercial success while fostering employee development.

**COST** RM1,250\*/DAY

**CONTACT:** [malaysia@tacktmiglobal.com](mailto:malaysia@tacktmiglobal.com)

## TRAINING FORMAT:



7 modules



2 days + (0.5 days check-in after 8 weeks)

## TARGET AUDIENCE:

- Women leaders committed to creating a more inclusive and equitable workplace environment
- Emerging women leaders dedicated to developing the skills and knowledge necessary to excel in their careers
- Men supporting women leaders seeking to advocate for and promote women's leadership



**Begin your own empowering journey through our workshop which combines an immersive blend of interactive discussions, practical exercises, and reflective practices and unleash your potential to become a DEI-driven leader, shaping a more inclusive and equitable future for all.**