

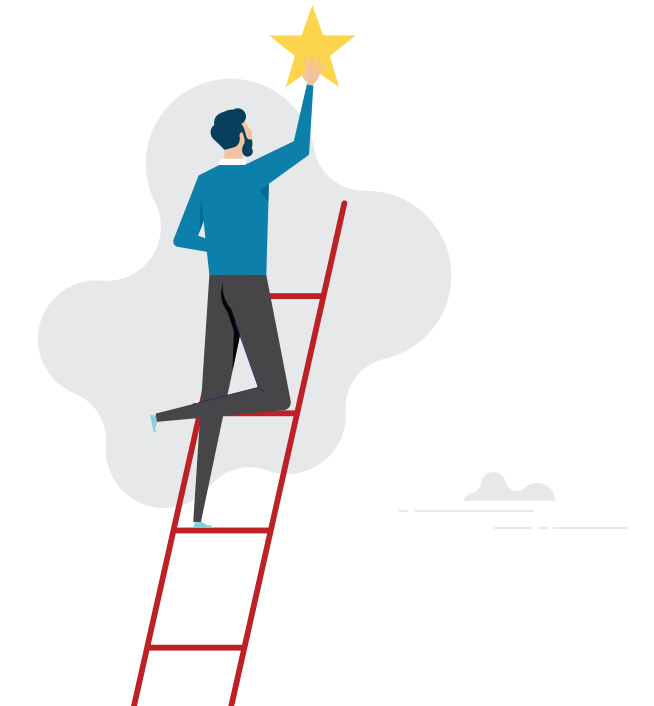
2 DAYS OPEN PROGRAMME

BREAKING BARRIERS: DEI EMPOWERED **WOMEN** IN LEADERSHIP



AGNES ELIZABETH

Managing Director



Tack TMI Malaysia

TMI Consultancy Sdn. Bhd. (633749-K)
B-2-3, Block B, Plaza Damas
60 Jalan Sri Hartamas 1
50480 Kuala Lumpur, Malaysia

[CLICK HERE TO RESERVE YOUR SEAT](#)

Questions? **Chat** with us.





OVERVIEW:

The corporate landscape is more dynamic and interconnected than ever before. Today, diversity, equity, and inclusion (DEI) are not just buzzwords; they are the cornerstones of transformative leadership.

Embark on a profound journey of exploration, delving into the nuances of DEI and its profound impact on women's leadership journeys. Equip yourself with the strategies to lead change initiatives that promote DEI within your organization.

The challenges faced by women in the workplace is unique to our Asian culture and mindset. Develop specific leadership skills to address these challenges and garner consensus, overcome resistance, and cultivate a culture of equity and inclusion.

Nurture your personal commitment to continuous learning and growth as a DEI-powered woman leader.

COURSE OUTCOMES:

- Identify and analyze various leadership styles and develop strategies to effectively navigate challenges
- Develop strategies to lead change initiatives and cultivate allies to advance DEI goals
- Apply DEI principles to build inclusive teams and address unconscious bias in the workplace
- Master effective communication and negotiation techniques to enhance their leadership impact

TARGET AUDIENCE:

- Women leaders committed to creating a more inclusive and equitable workplace environment
- Emerging women leaders dedicated to developing the skills and knowledge necessary to excel in their careers
- Men supporting women leaders seeking to advocate for and promote women's leadership

TRAINING FORMAT:



7 modules



2 days + (0.5 days check-in after 8 weeks)



EARLY BIRD OFFER

discount
10%

1 PAX **RM 1,099*** /DAY

2nd PAX **RM 989*** /DAY
from the same company

4 PAX **RM 989*** PER PAX/DAY
from the same company



COURSE FEE

1 PAX **RM 1,250*** /DAY



CLICK HERE TO RESERVE YOUR SEAT

* The course fee displayed does not include Malaysia's Sales and Service Taxes (SST); the final invoiced amount will be inclusive of SST. Price is valid for sign-ups or paid registrations by 25 March 2024, on a first-come, first-served basis.

+603 6203 4410

Contact: Agnes | Maryleen

agnes@tmimalaysia.com | maryleen@tmimalaysia.com